

Event Space Rental Rates*

1F		Regular	Affiliate / Member
Lobby (3,000 ft ²)	Full Day (8 Hrs)	\$ 1,500	Please contact rental@lipont.com
Garage Art Space™ (5,000+ ft ²)	Full Day (8 Hrs)	\$ 3,000	Please contact rental@lipont.com
Meeting Room # 107	Full Day (8 Hrs)	\$ 250	\$ 150
	Included equipment : Wifi connectable TV, conference table, chairs, writing board		
Office #101	Full Day (8 Hrs)	\$ 180	\$ 100
Office #102	Full Day (8 Hrs)	\$ 180	\$ 100
Lunch Room # 110	Full Day (8 Hrs)	\$ 180	\$ 100
	Included equipment : Sink, mini fridge, water kettle, coffee maker, microwave		
Room # 111	Full Day (8 Hrs)	\$ 250	\$ 150
Room # 112	Full Day (8 Hrs)	\$ 180	\$ 100
Room # 114	Full Day (8 Hrs)	\$ 300	\$ 250
Room # 105	Full Day (8 Hrs)	\$ 180	\$ 100
2F		Regular	Affiliate / Member
Conference Room # 201	Full Day (8 Hrs)	\$ 250	\$ 150
	Included equipment : Wifi connectable TV, projector, conference table, chairs, writing board		
Office # 202	Full Day (8 Hrs)	\$ 250	\$ 150
	Included equipment : Sink, cabinet		
Office # 206	Full Day (8 Hrs)	\$ 180	\$100
Office # 207	Full Day (8 Hrs)	\$ 180	\$ 100
Office # 209	Full Day (8 Hrs)	\$ 180	\$ 100
Office # 210	Full Day (8 Hrs)	\$ 250	\$ 150
Room # 211	Full Day (8 Hrs)	\$ 250	\$ 150

Full Day Ground Floor Filming Rental Package

Full Day Package (12 hrs)	\$ 12,500	Includes : - Parking Lot A and B (Over 100 Stalls) - All rooms on the first floor (except room #111, # 113, and all unlisted rooms) - All/any System Services
Extended day Package (24 hrs)	\$ 16,667	

Parking Lot Rental Rates

PARKING		Regular
Parking Lot A 45 stalls South Side	Work Day (8 Hrs)	\$ 500
	Full Day (12hrs)	\$ 750
	Extended Day (24hrs)	\$ 1000
Parking Lot B 50 stalls West Side	Work Day (8 Hrs)	\$ 500
	Full Day (12hrs)	\$ 750
	Extended Day (24hrs)	\$ 1000
Parking Lot C 150 Stalls North Side	Work Day (8 Hrs)	\$ 750
	Full Day (12hrs)	\$ 1000
	Extended Day (24hrs)	\$ 1500

Equipment Rental Rates

SYSTEM SERVICES		Regular	Affiliate / Member
Full Audio & Video System	Half Day (4 Hrs)	\$ 300	\$ 180
	Full Day (8 Hrs)	\$ 500	\$ 300
	Including : Stage / Stage Light / Audio System / Projector, Mandatory Service Fee : \$ 50 / hr / person		
Stage System	Half Day (4 Hrs)	\$ 100	\$ 60
	Full Day (8 Hrs)	\$ 180	\$ 100
	Including : 16' x 8' (Four separate 4' x 8' risers)		
Audio System	Half Day (4 Hrs)	\$ 200	\$ 150
	Full Day (8 Hrs)	\$ 350	\$ 250
	Including : Audio mixer / wireless microphones / wired microphone, Mandatory Service Fee : \$ 50 / hr / person		
Lighting System	Half Day (4 Hrs)	\$ 100	\$ 60
	Full Day (8 Hrs)	\$ 180	\$ 100
	Mandatory Service Fee : \$ 50 / hr / person		
HD Projector	Half Day (4 Hrs)	\$ 100	\$ 60
	Full Day (8 Hrs)	\$ 180	\$ 100
LED Screen	Half Day (4 Hrs)	\$ 300	\$ 150
	Full Day (8 Hrs)	\$ 500	\$ 250
	Including : Resolution of 512 x 1024 px / 2m tall by 4m wide / 6.4' x 12.8'		

Regular hours of operation :

Daily, 9 am - 5 pm, closed on statutory holidays.

After hour Charges

5 pm - 9 pm.

Service fee \$100/hour/person

9 pm – 9 am

Service Fee \$150/hour/person

Included Amenities

- Free Wifi connection
- Loading area
- Kitchen sink
- Kitchen mini fridge
- Event storage space (up to 500ft²)
- 24-hour video surveillance
- Alarm system
(security service is extra)
- Wheelchair accessible on
ground level and washrooms

Insurance

- Insurance is required for all venue rentals at Lipont Place.
- Special Event Liability Insurance (ranges on nature of event).
- Host Liquor Liability Insurance (if applicable).
- You have the option to purchase insurance through Lipont Place or through an alternative provider.
- Proof of insurance will need to be submitted to Lipont Place 30 calendar days prior to event.

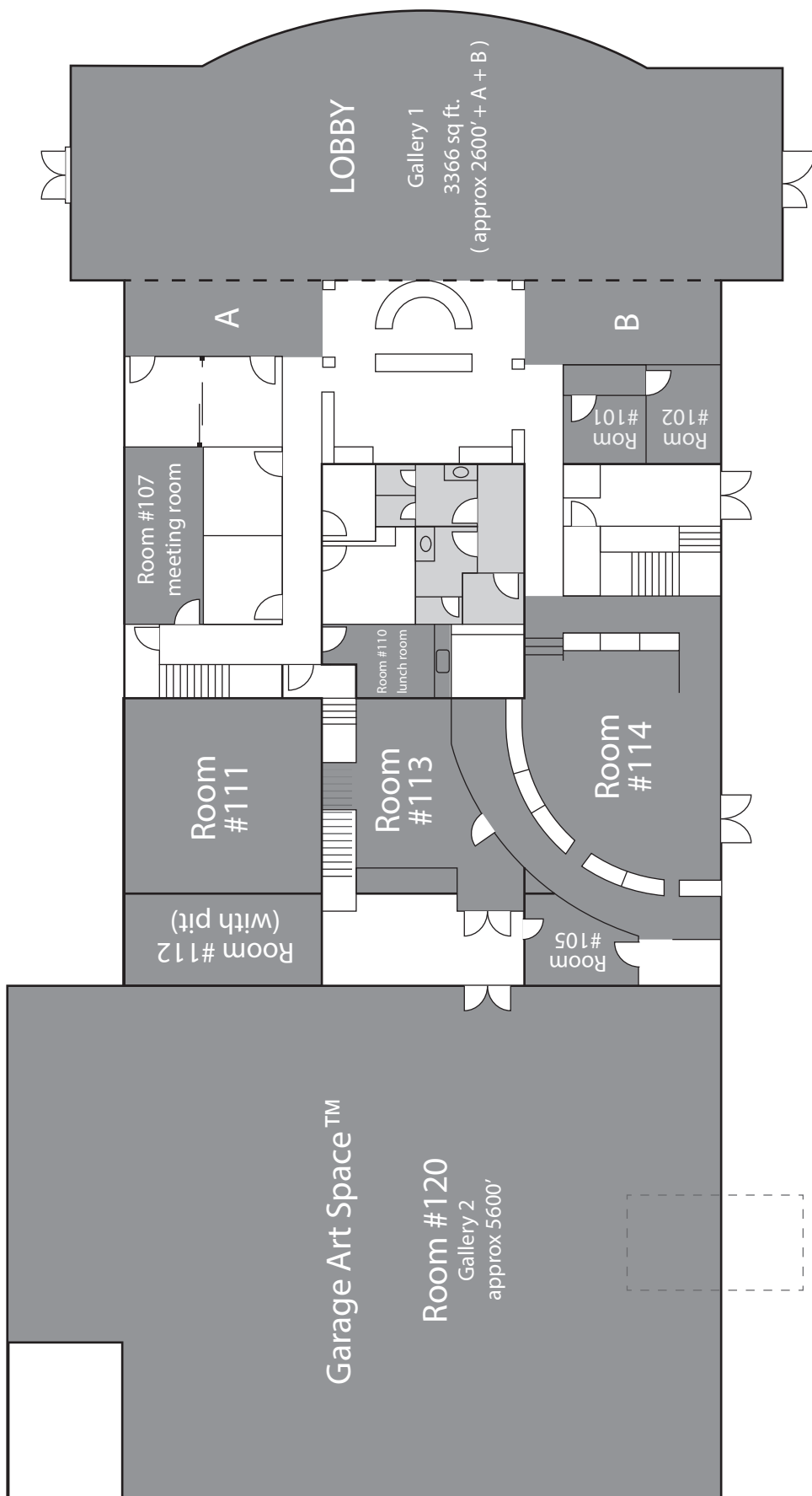
Included Furniture and equipment

- Full-body mirror
- Coat racks x2
- Six-foot foldable white table x10
- Foldable white chairs x80
- Movable gallery walls (8' x 12' x 2')
- Foldable display panels (8' x 8')

Extra Furniture and equipment

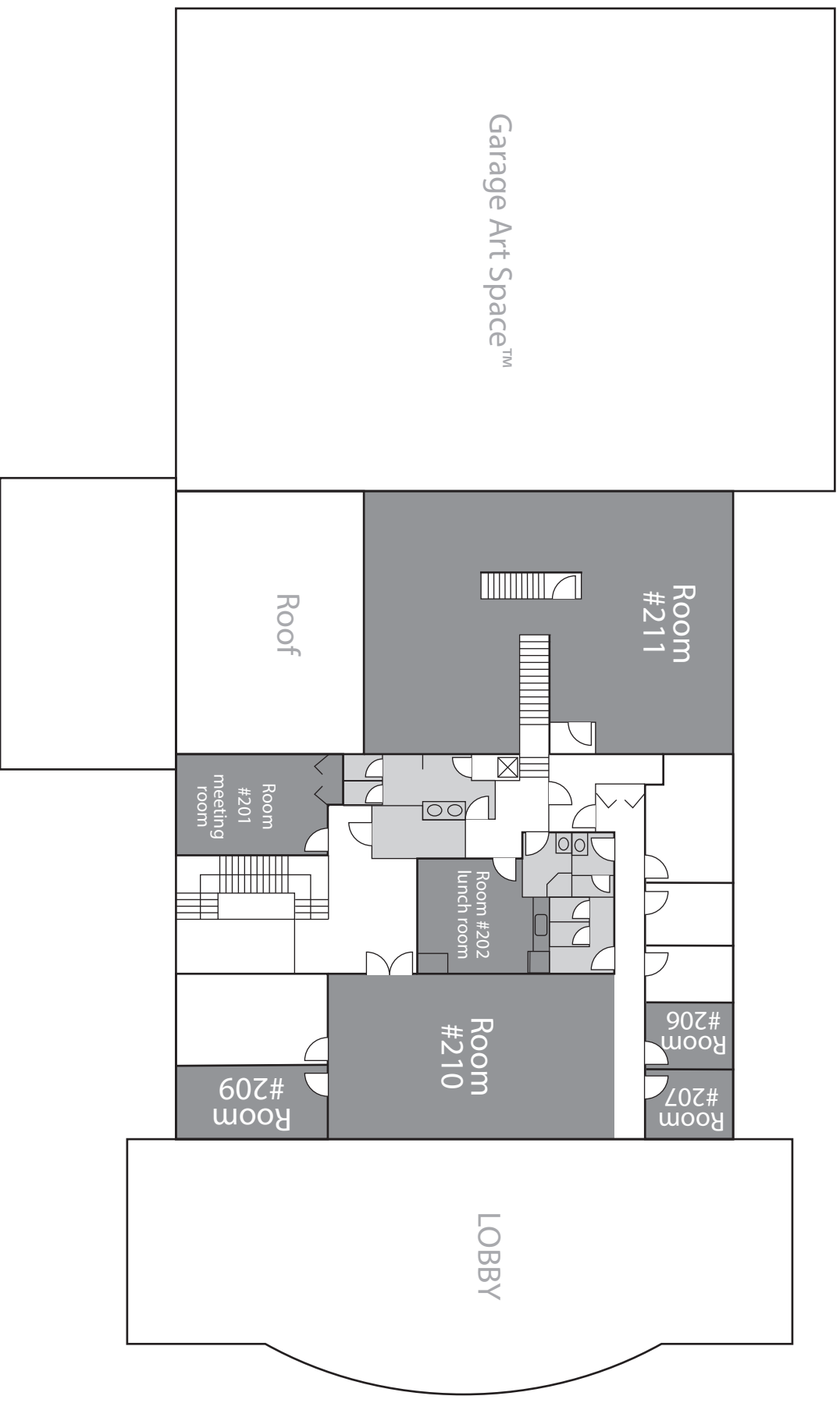
- Extra Tables \$10each/day
- Extra Chairs \$5each/day

Nonprofit organizations please contact
rental@lipont.com
or (604) 285-9975



- LIPONT PLACE**
 4211 No. 3 Road, Richmond, BC V6X 2C3
 1st FLOOR
- Room #101: 85 sq ft (10' 3" x 8'6")
 - Room #102: 110 sq ft (12'2" x 9'3")
 - Room #107: 220 sq ft (21'11" x 10'4")
 - Room #111: 595 sq ft (24'7" x 24'10")
 - Room #112: 254 sq ft (24'7" x 10'3")
 - Room #104: 700 sq ft
 - Garage Art Space™: approx 5600' (65'4" x 88'6")
 - Lobby : approx 2600' (28'x 90') + A + B

The lobby windows are fully covered by UV film.



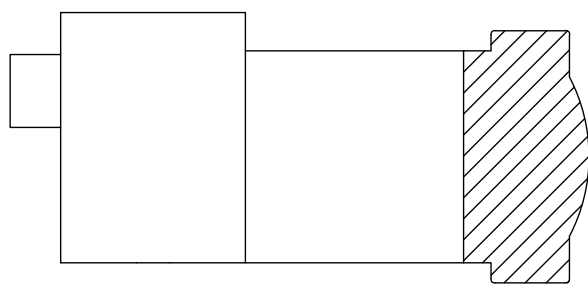
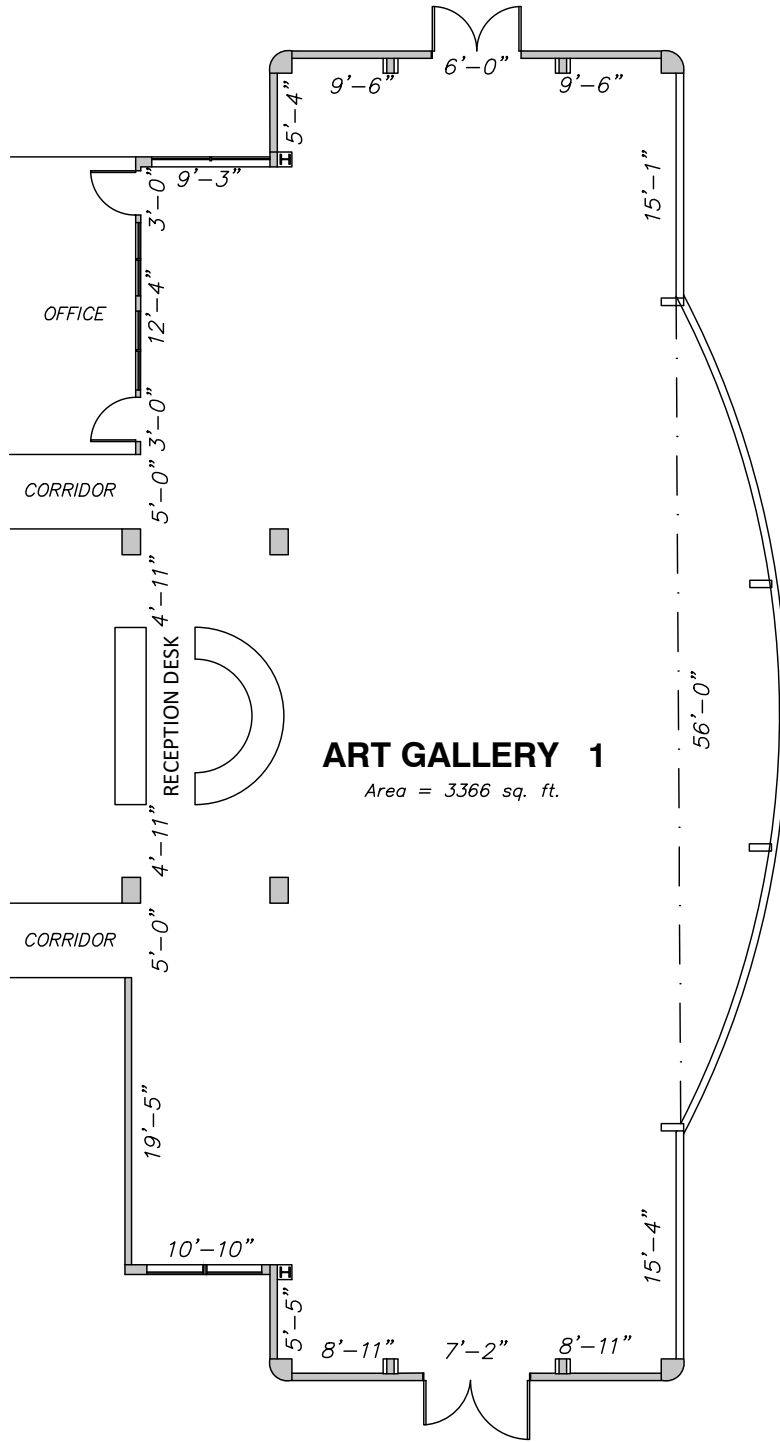
LIPONT PLACE

4211 No. 3 Road, Richmond, BC V6X 2C3

2nd FLOOR

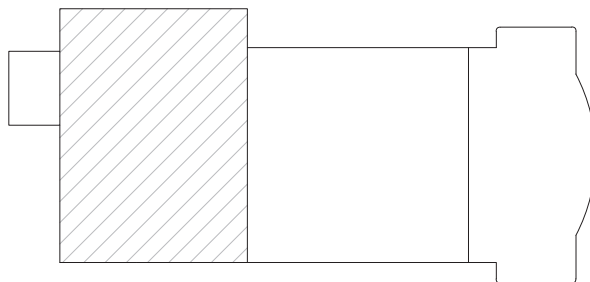
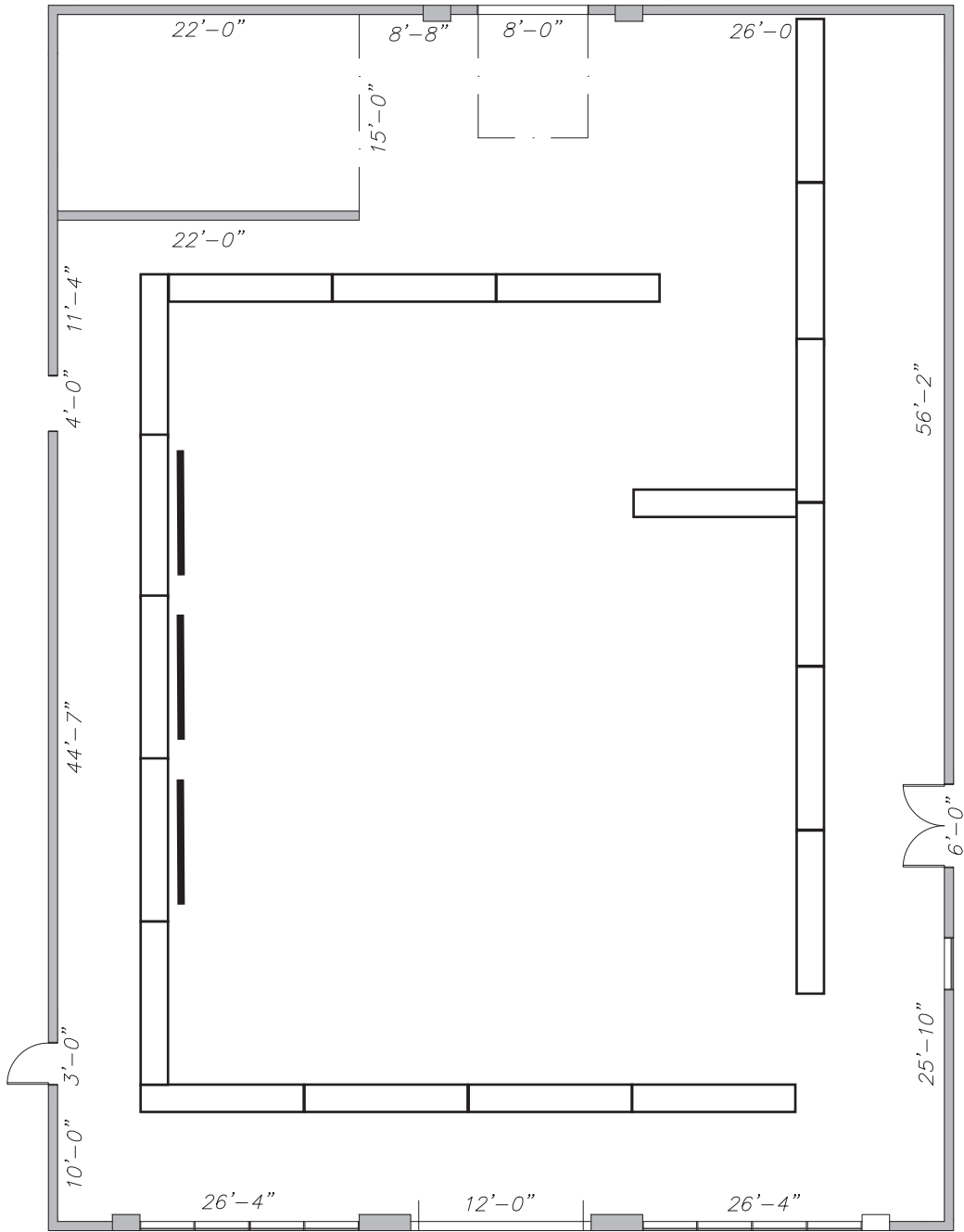
- Area Available For Rent
- Washrooms

- Room 201: 210 sq ft (18' x 14'2")
- Room 202: 280 sq ft (17'7" x 15'9")
- Room 206: 115 sq ft (9'6" x 12'5")
- Room 207: 115 sq ft (9'6" x 12'5")
- Room 209: 170 sq ft (9'6" x 18')
- Room 210: 1,100 sq ft (22' x 50')
- Room 211: 1,700 sq ft (36'4" x 50')



NO. 3 ROAD

BROWNGATE R



NO. 3 ROAD



BROWNGATE ROAD